



***Report of the
Aerospace Employees'
Retirement Plan
Committee for Plan Year 2019***

Steven M. Leontis, Committee Chair



Outline

- Aerospace Employees' Retirement Plan (AERP) Programs
- Management and Administration of AERP
- Plan Year Information
 - *Statistics*
 - *Fund Status*
- Comparison to Inflation



AERP Programs

AERP 1: Defined Benefit Plan

- Effective for employees hired prior to January 1, 1993
 - *Fixed Benefits and Variable Benefits accrue*
 - Beginning October 1, 2018, only Variable Benefits will accrue at 1.3%
 - Beginning October 1, 2023, plan will be frozen
 - *Plan participants keep vested benefits and will be moved to the 401(k) for future benefits*
 - *Paid as a monthly annuity at retirement*

Combined Retirement Program (CRP)

- Effective on October 1, 2005
 - *All employees hired on or after April 1, 2005*
 - *Other eligible AERP 1 and ASAP 1 employees who had elected CRP in August 2005*



AERP Programs

Combined Retirement Program (CRP) (cont.)

- Employees are enrolled in two separate plans
 - *AERP 2: Defined Benefit Plan*
 - 3-year vesting for active employees effective October 1, 2011
 - Similar to AERP 1 but with somewhat less than half the benefits
 - *ASAP 2: Defined Contribution Plan*
 - Company contribution of 4% of compensation
 - Immediate vesting
 - Diversified investment account choices
- Plan frozen as of September 30, 2018
 - *Plan participants keep vested benefits and moved to the 401(k) for future benefits*

> **NOTE: Employees hired before April 1, 2005 who did not elect the Combined Retirement Program will remain either in AERP 1 or in ASAP 1.**

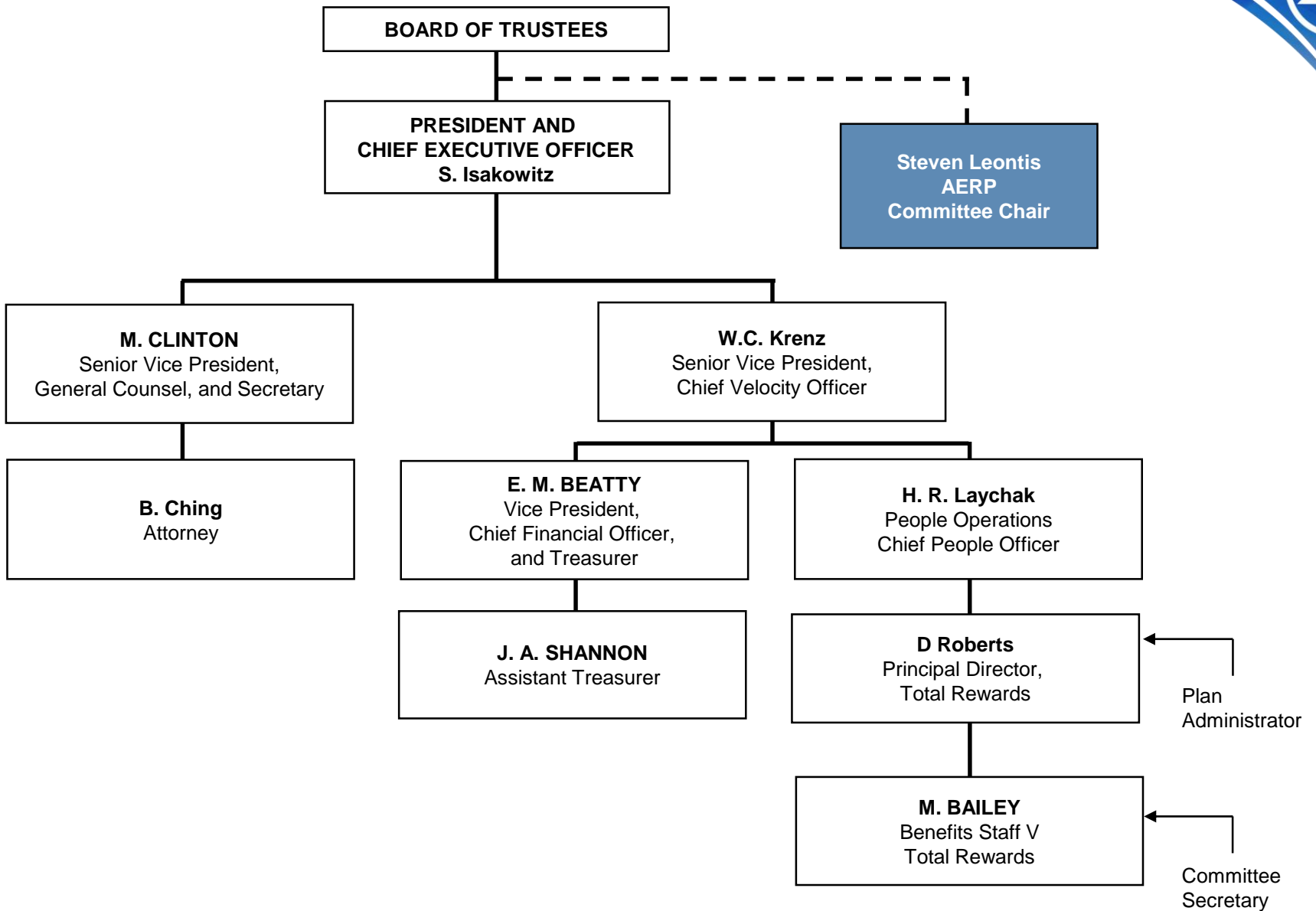


AERP Committee

- Purpose
 - *Administers the Plan*
 - *Approves Plan amendments and actuarial assumptions*
 - *Reviews Plan funding*
 - *Manages appeals process to determine entitlement*
 - *Not responsible for investing Plan assets*
- Membership
 - *Steven Leontis (Chair)**
 - *Jennifer A. Shannon**
 - *David Roberts**
 - *Brenda Ching**
 - *Joseph M. Straus (retired) **

 - *Maryann Bailey (Secretary)*

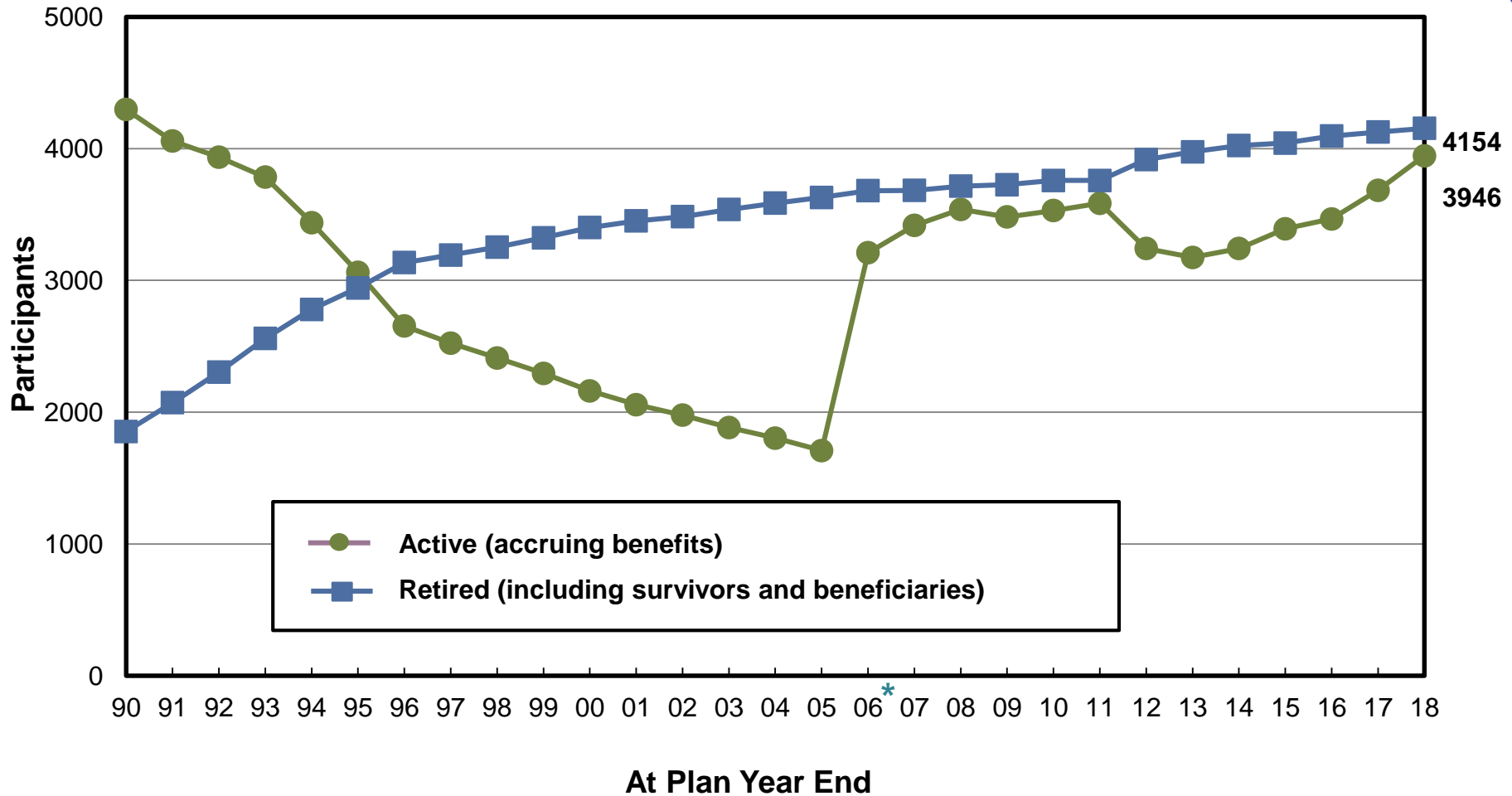
* *Voting members*





Aerospace Employees Retirement Plan

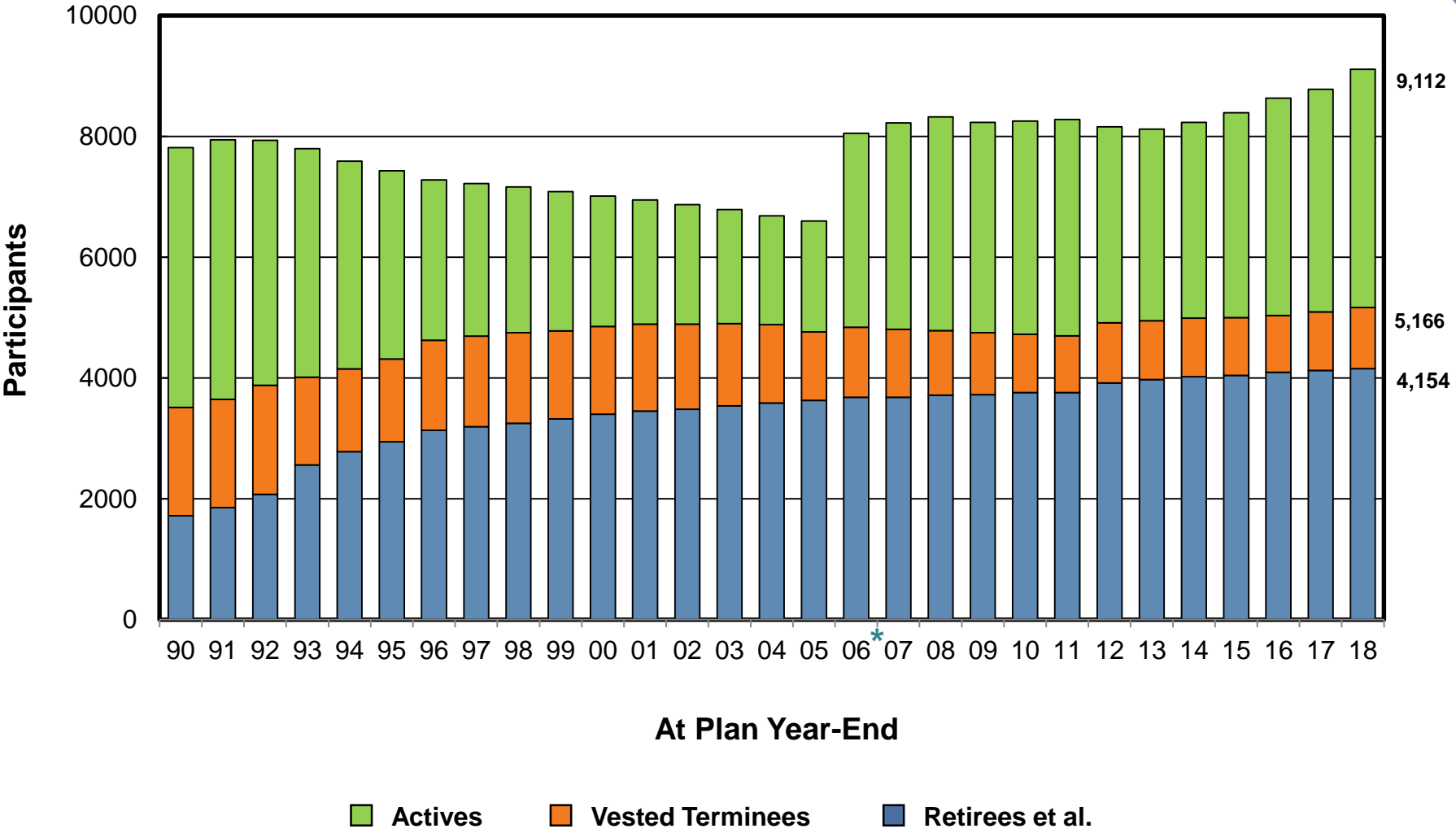
Active Participants and Retired Participants



*Combined Retirement Plan opened



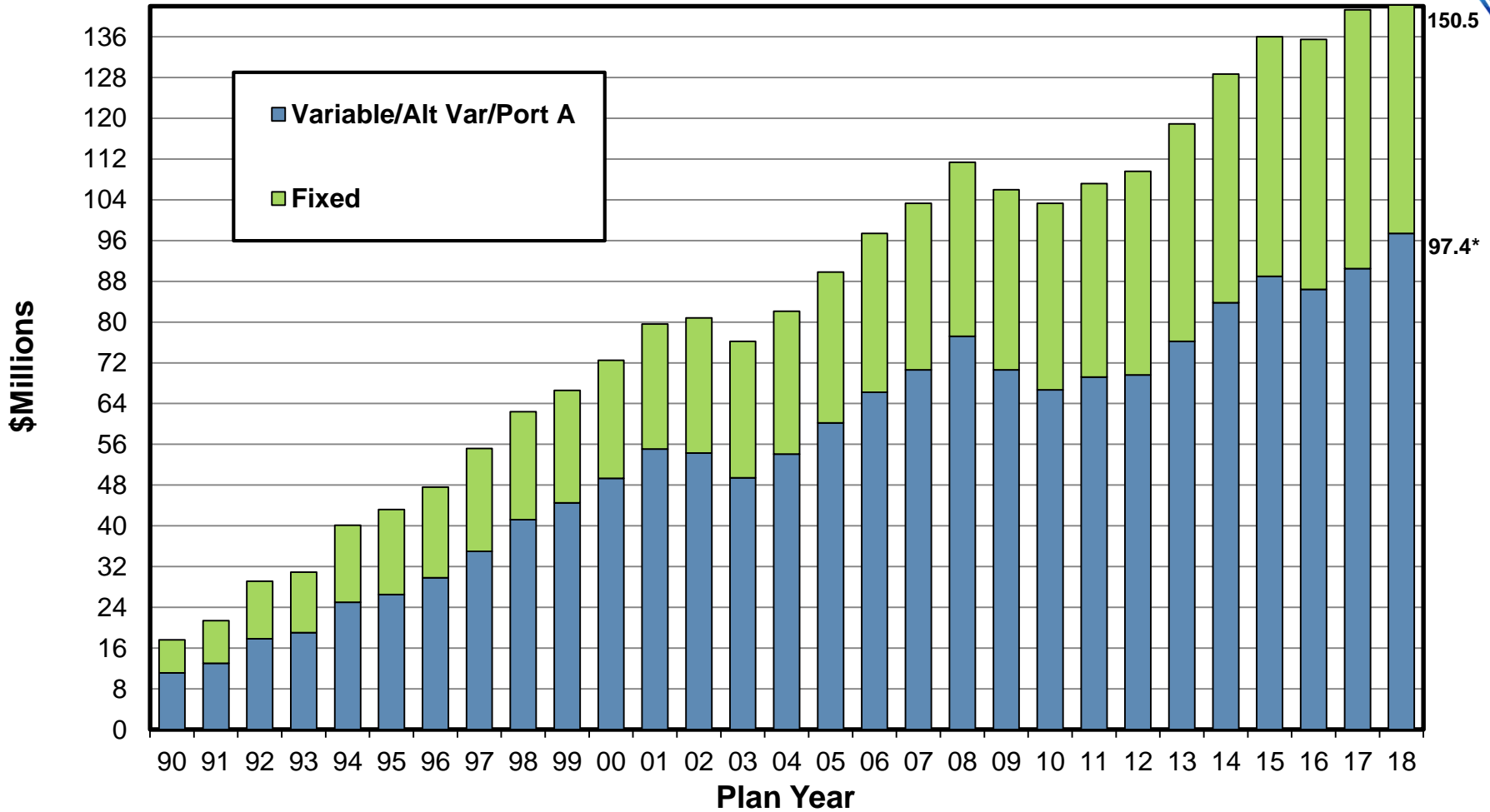
Retirement Plan Participants



*Combined Retirement Plan opened



Benefit Payments



*Includes withdrawal of \$1.1 million from the Optional Contribution Account



Corporate Contribution

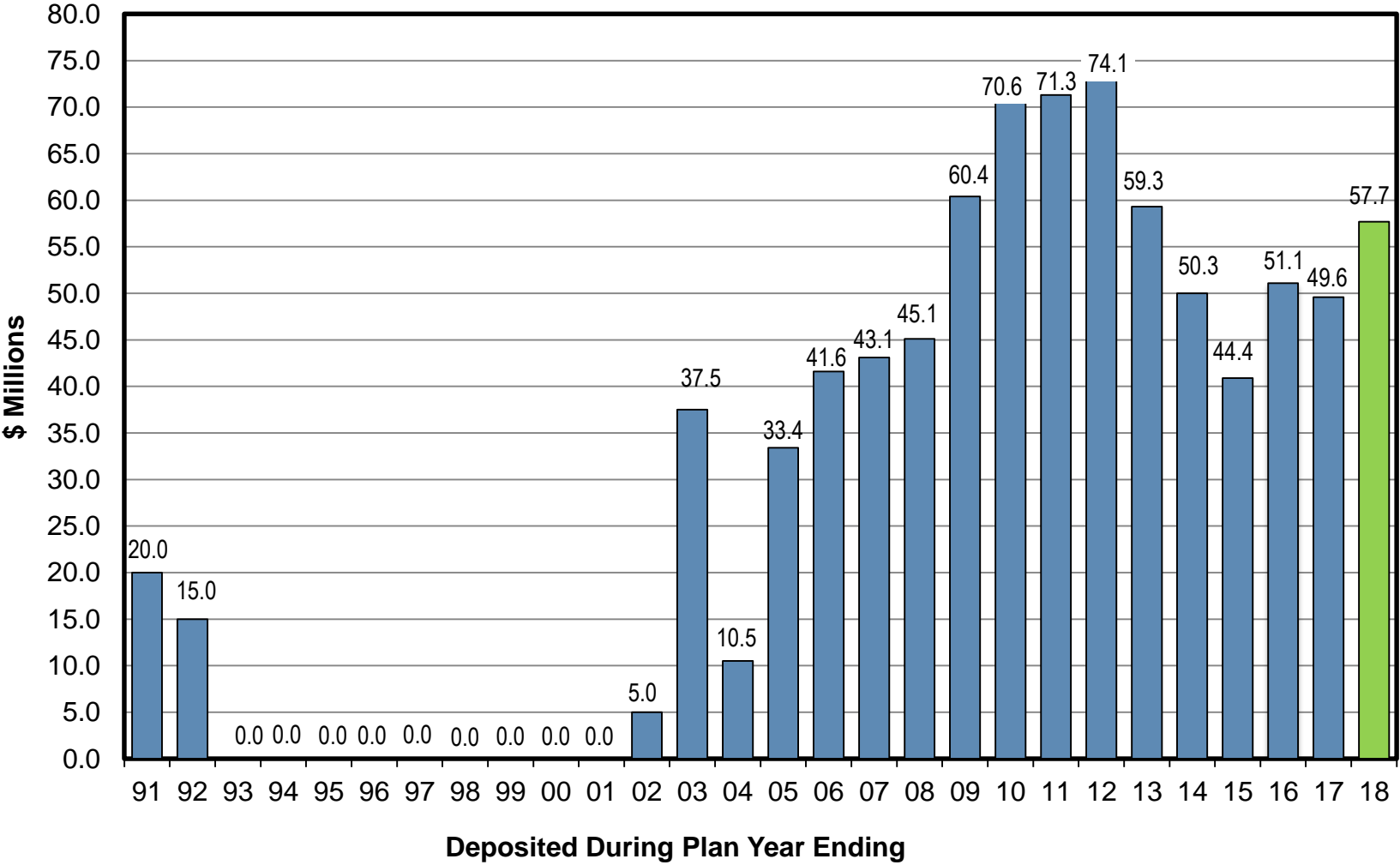
Moving Ahead for Progress in the 21st century (MAP-21)

- Changes how pension plans calculate pension liabilities under ERISA
- Prior to MAP-21, pension plans determined liabilities using a two-year average of interest rates
- MAP-21 was modified by the Highway and Transportation Funding Act of 2014 (HAFTA) and the Bipartisan Budget Act of 2015 (BBA)
 - Includes extensions of the phase-out period
- With MAP-21 and its modifications, pension plans take into account a 25-year average of interest rates that will phase out over time
 - Map-21 causes interest rates to likely be higher and Plan liabilities lower
 - Lower minimum required contribution to the Plan



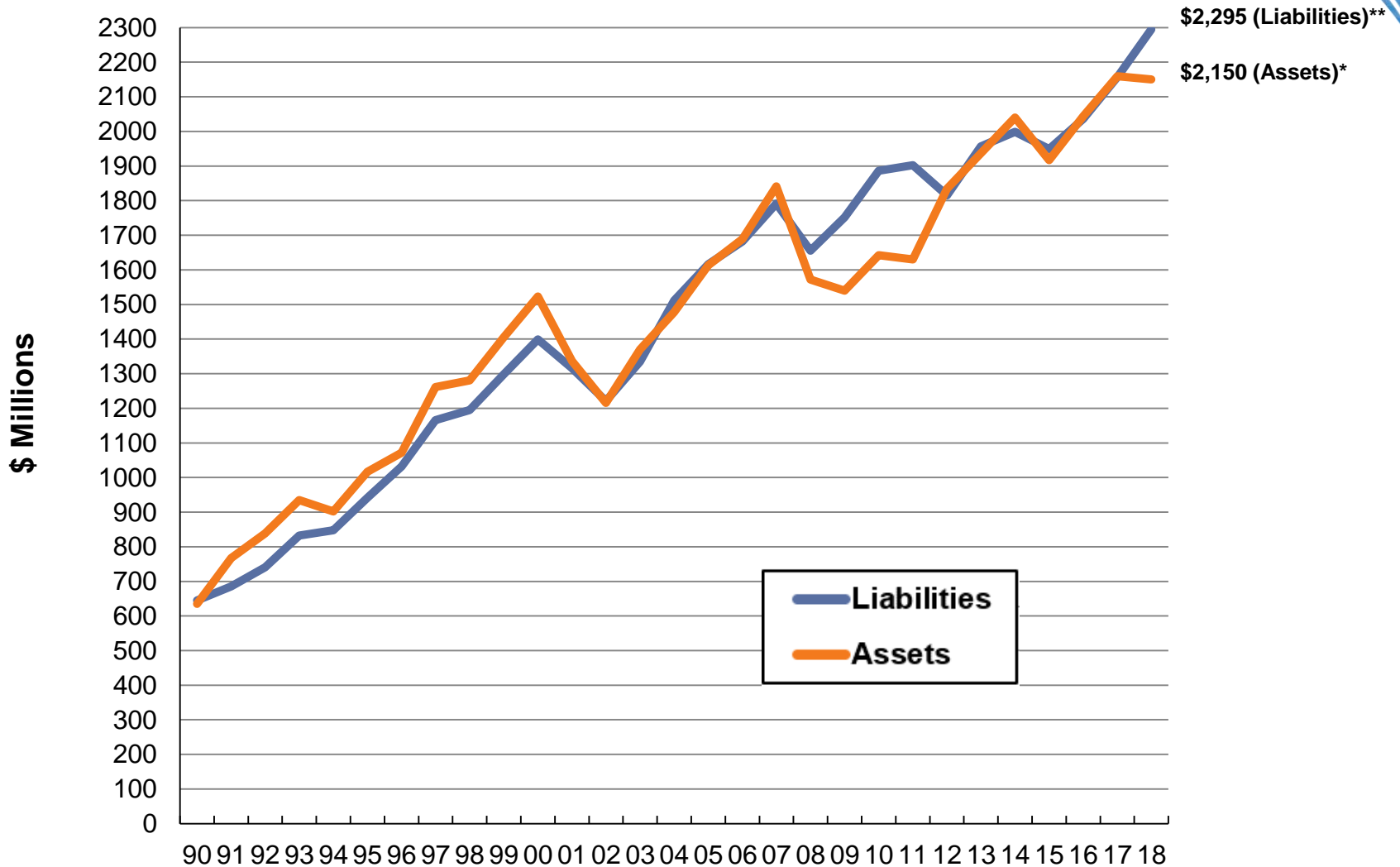
Corporate Contribution

For Annuity Benefits





Total AERP Plan Assets and Liabilities



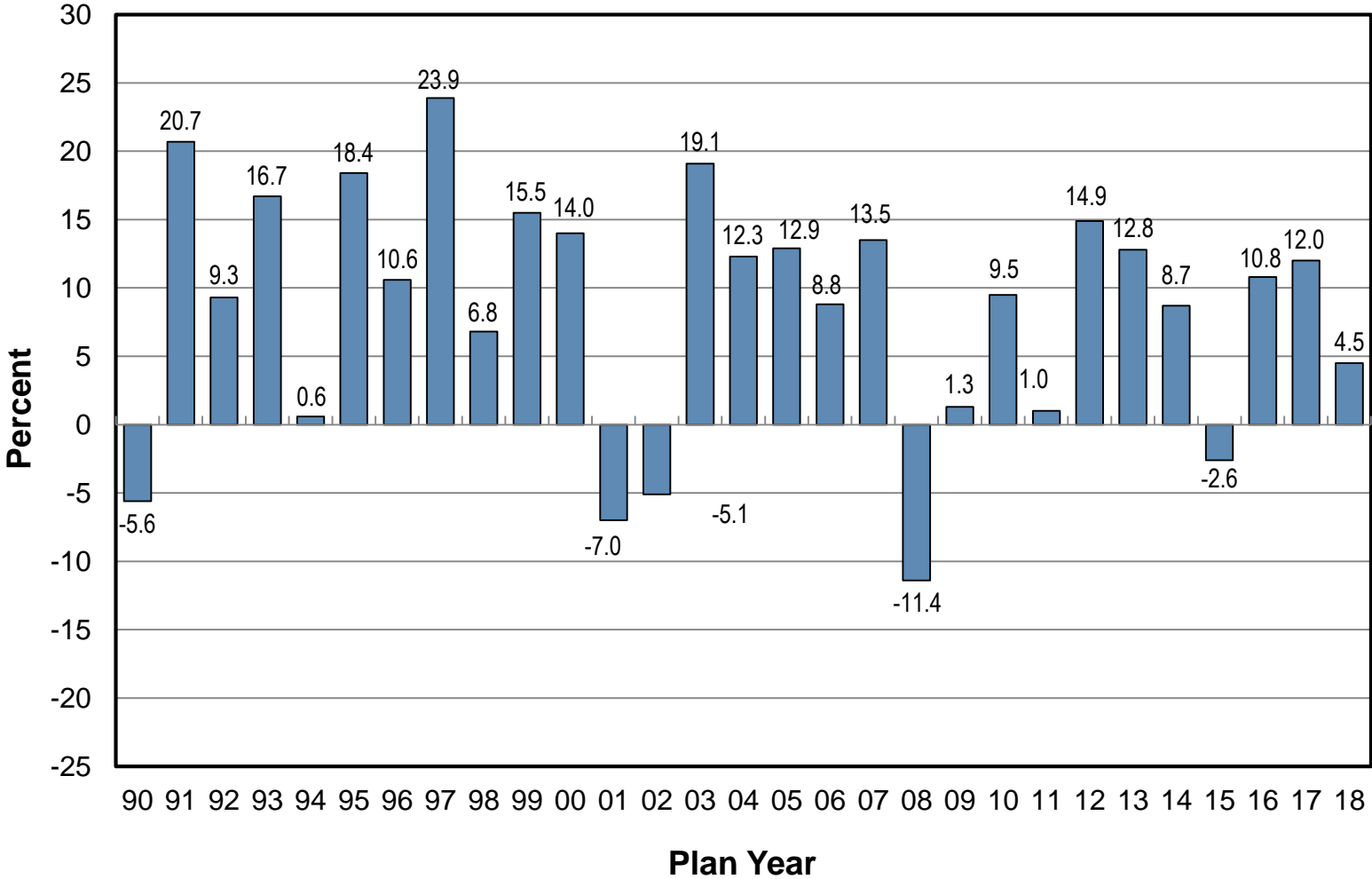
* Assets exclude Optional Contribution account.

** Liability is based on MAP-21 stabilized rates.



Annual Investment Performance

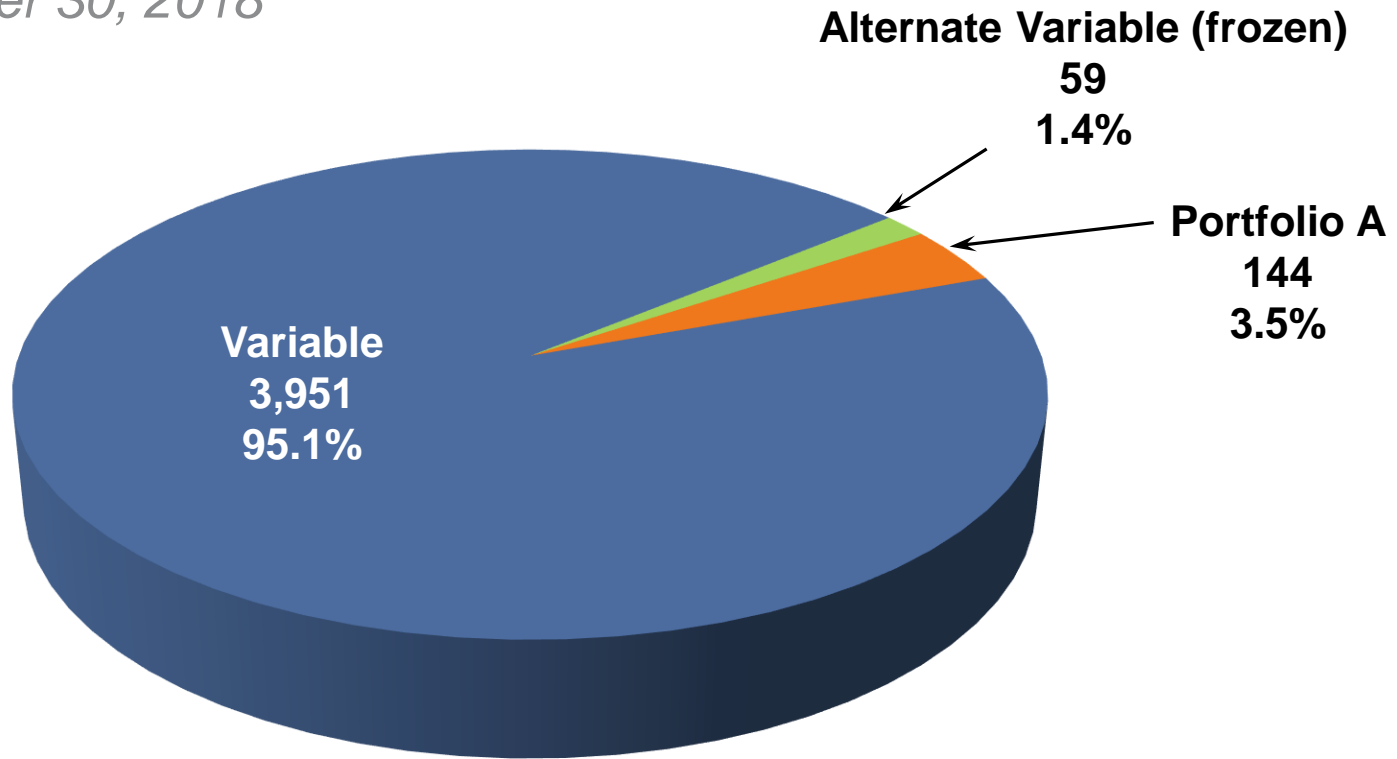
Based on Performance of Plan Assets for Variable Benefits





Distribution of Retirees/Beneficiaries by Type of Variable Benefit Payments

September 30, 2018

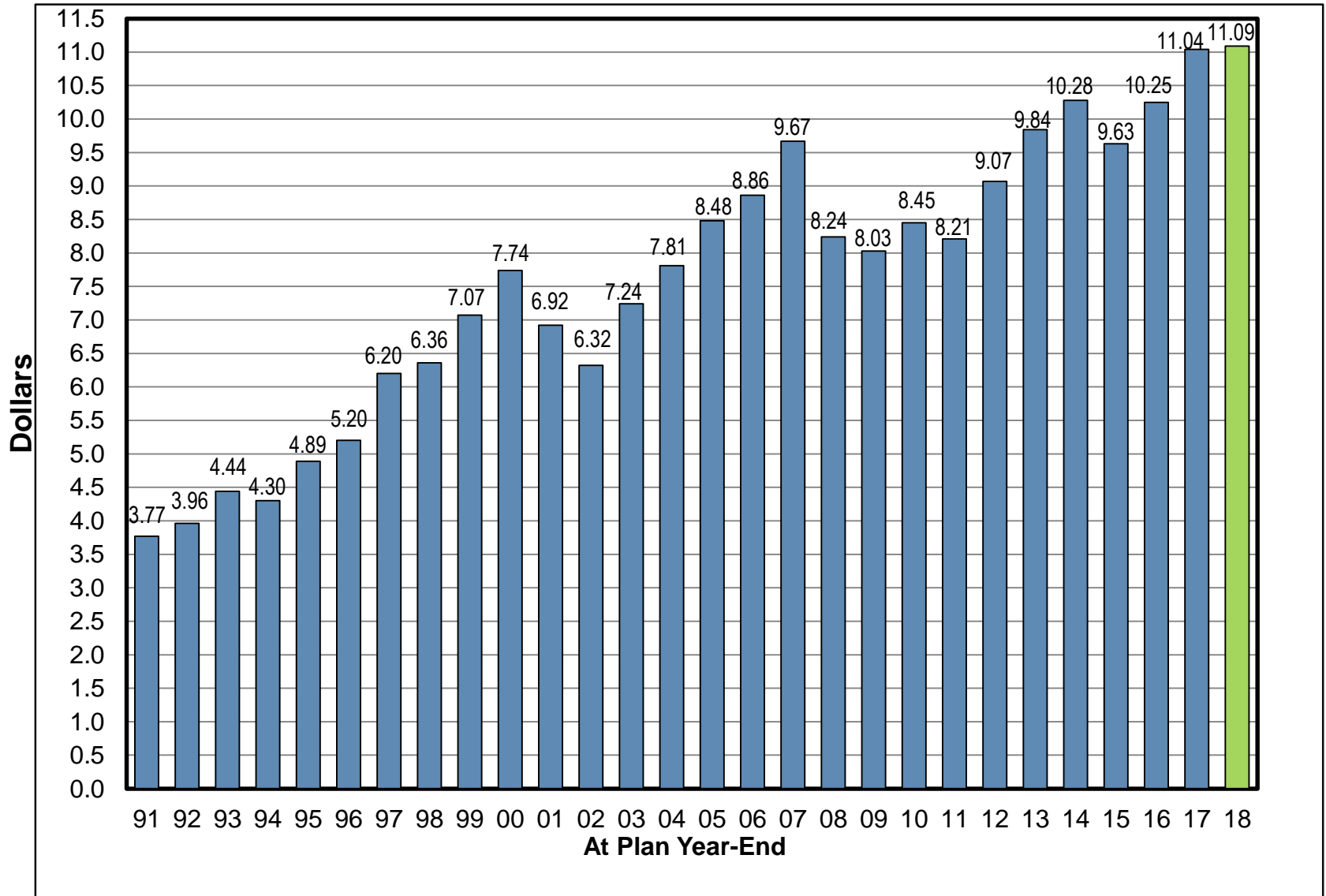


Total Retirees/Beneficiaries: 4,154



Variable Benefit

Unit Value

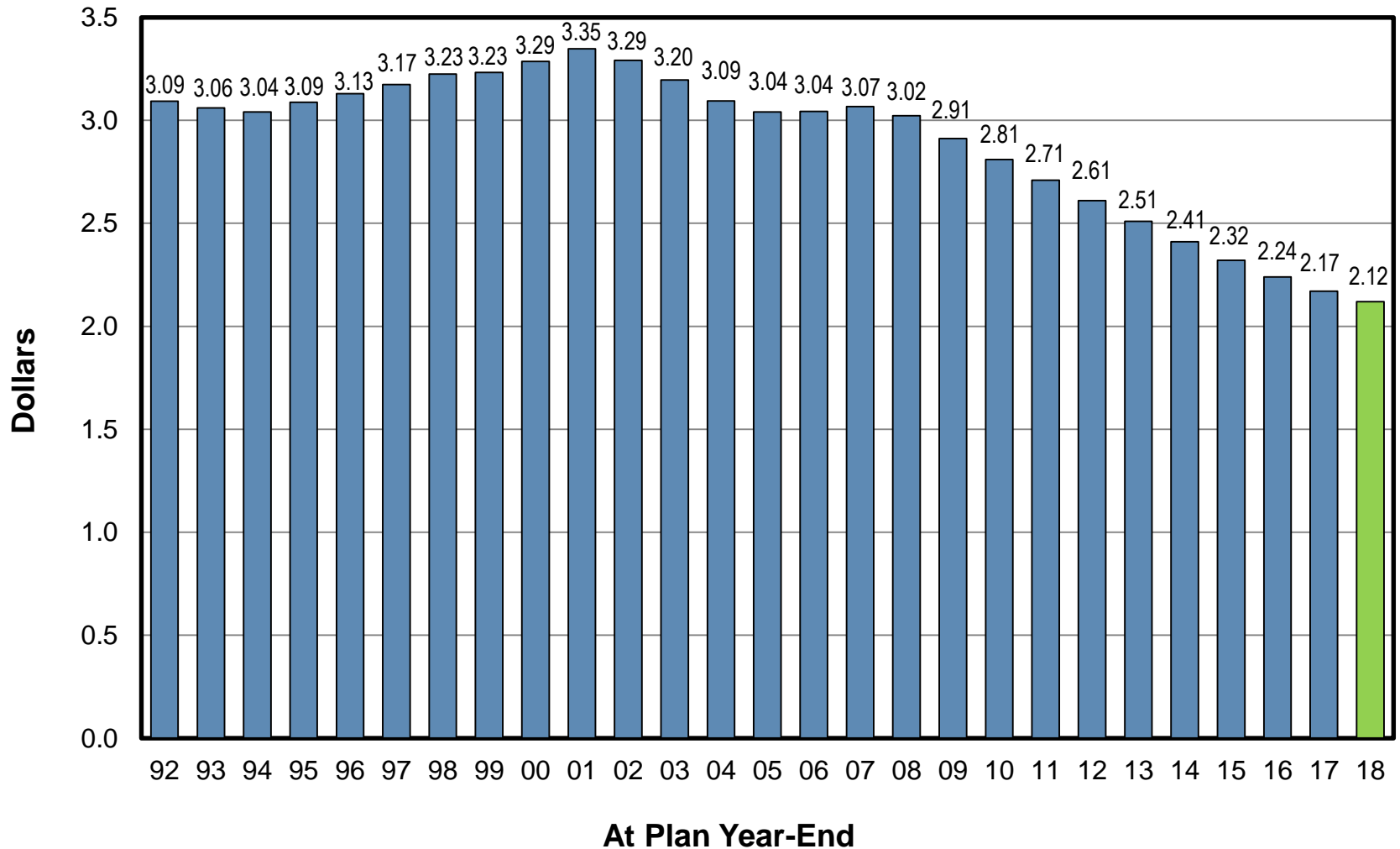




Alternate Variable Benefit

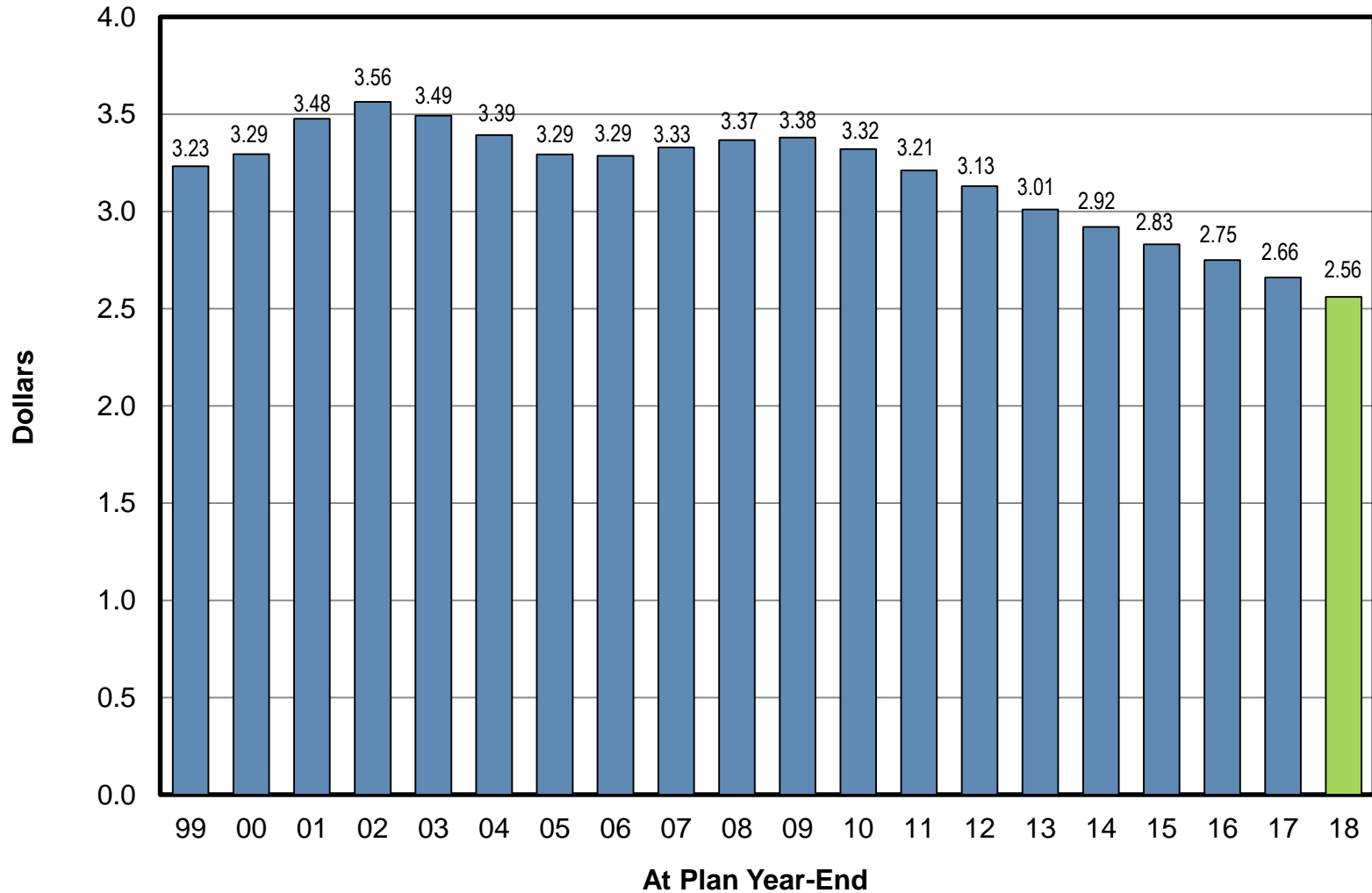
Unit Value

(Frozen Option Effective August 15, 1999 — No New Entrants)



Portfolio A Benefit

Unit Value





AERP Asset Changes

October 1, 2017 – September 30, 2018
(Dollars in Millions)

Actuarial value 9/30/17	\$2,159.1
Plus: Interest to end of Plan Year	127.4
Plus: Contributions with interest	56.1*
Less: Benefits, expenses, and other with interest (160.1)	
Plus: Actuarial asset gain/loss	32.5
Actuarial value 9/30/18	\$2,150.0**

* For ERISA purposes, contributions of \$24.8M and \$31.3M were made during the 2017/2018 and 2018/2019 Plan Years, respectively. Both amounts reflect interest adjustments to September 30, 2017.

** Assets exclude Optional Contribution account. As of 9/30/2018 the Optional Contribution Account had assets of \$19.1 million.



AERP Liability Changes

October 1, 2017 – September 30, 2018

(Dollars in Millions)

Liabilities 9/30/17 (excluding Optional Contributions)	\$2,156.7
Plus: Normal cost for Plan Year including expenses	39.5
Plus: Interest adjustment	129.6
Less: Benefit and administrative expenses with interest	(160.1)
Less: Investment gains	(16.3)
Plus: Net demographic experience	22.7
Plus: Change in mortality assumption	106.5
Plus (Less): Change in discount rates	19.4
Plus (Less): Changes in other assumptions	0
Plus (Less): Change in method	0
Less: Plan amendment changes	(2.7)
Liabilities 9/30/2018 ⁽¹⁾	<u>\$2,295.3</u>

⁽¹⁾ Liability is based on MAP-21 stabilized rates.



Financial Condition of the Plan

September 30, 2018

- The Plan's actuary prepares an annual actuarial valuation to determine the value of the liabilities, the value of the assets, and the customary contribution (allowable for actual reimbursement under government contracts)

Dollars in Millions

Assets (Actuarial Value)	\$2,150.0
<u>– Liabilities⁽¹⁾</u>	<u>2,295.3</u>
Surplus (Shortfall)	(145.3)

- There will be a company contribution in FY 2019
- External auditors audit the Plan each year and present a written audit report to the Board of Trustees in June

⁽¹⁾ The liability as of 9/30/18 was calculated using MAP-21 stabilized rates and represents a funding level of 94%. Without MAP-21, the funding level was 85%.



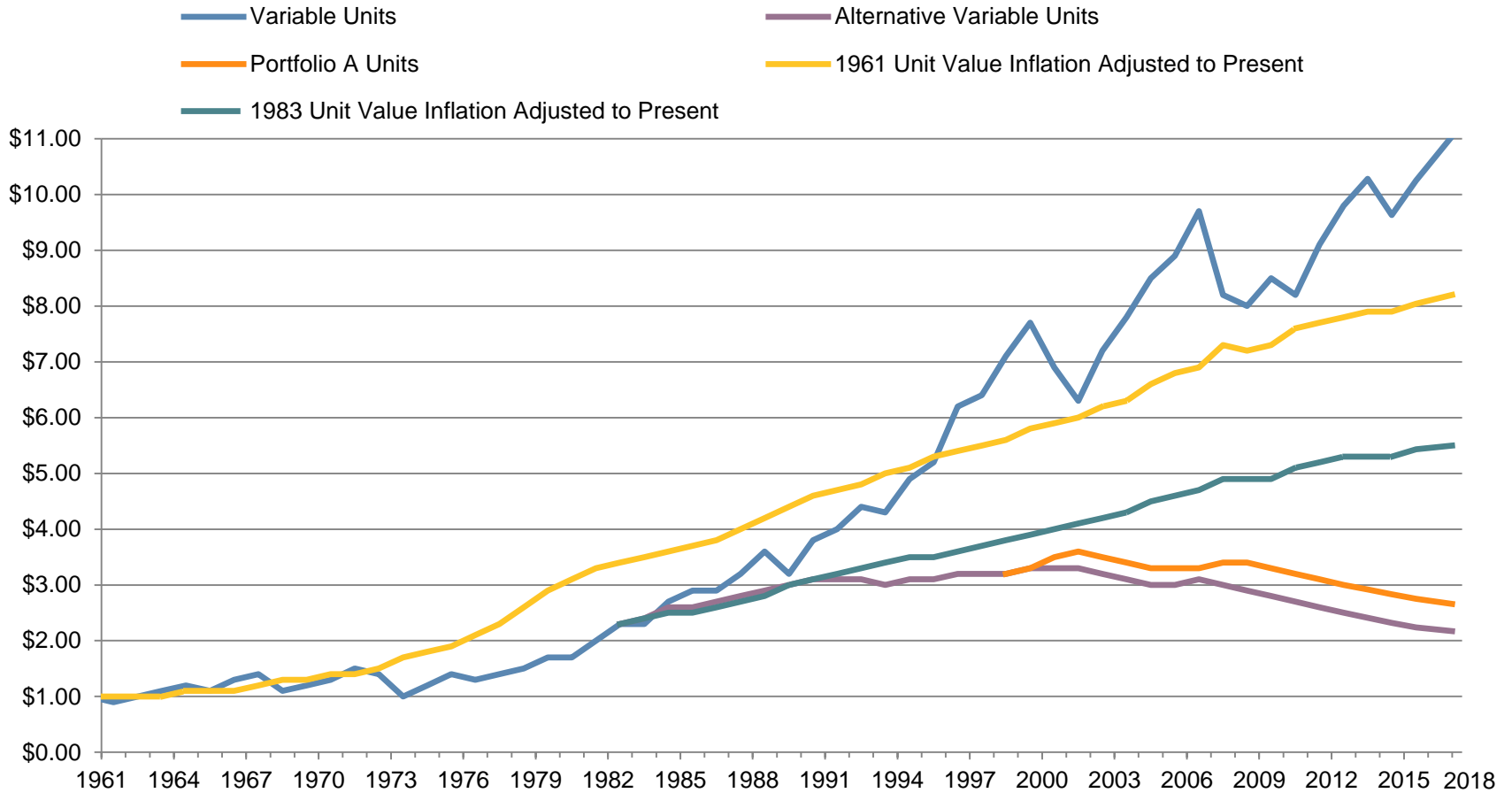
Allocation of Assets at Market Value

As of June 30, 2019 (Dollars in Millions)

	Fixed Benefit Portfolio	Variable Benefit Portfolio	Variable and Fixed Portfolio Subtotal	Percent of Total Assets
Common Stock				
Domestic	236.1	425.1	661.2	30.7%
International	89.5	195.1	364.8	17.0%
Fixed Income	413.6	603.0	1,016.6	47.3%
Real Estate	15.6	73.6	89.2	4.1%
Subtotal Fixed and Variable	754.8	1,377.0	2,131.8	99.1%
Other Assets				
Alternate Variable Fund			0.8	0.0%
Portfolio A			1.7	0.1%
Subtotal (Including Alt. Var. & Port A.)			2,134.3	99.2%
Optional Contributions			17.1	0.8%
Total Assets			2,151.4	100.0%



Comparison of AERP Unit Values to Inflation





Retirement Planning Website (RPW)

- Regular active employees may obtain more information regarding retirement income planning at <https://www.aeroretirement.com>
- RPW allows you to do retirement income projections from multiple sources:
 - *Aerospace Employees' Retirement Plan (AERP) monthly benefits*
 - *Aerospace 401(k)*
 - *Social Security*
 - *Additional savings and pensions*



Conclusion

- Detailed information available to participants on Aerospace HR/Benefits website <http://pages.aero.org/benefits/retirement/aerospace-employees-retirement-plan-aerp>
 - *Copies of this briefing*
 - *Actuarial valuation from Mercer*
 - *Audit report from Deloitte and Touche (available in late summer)*
- Retiree website <http://retirees.aerospace.org>
- Questions
 - *E-mail your questions to Annualbriefings@aero.org*
 - *Answers will be posted on the Retiree and Benefits websites under FAQs*